

Chilworth Street, W2 3HA

£2,400 Per Month



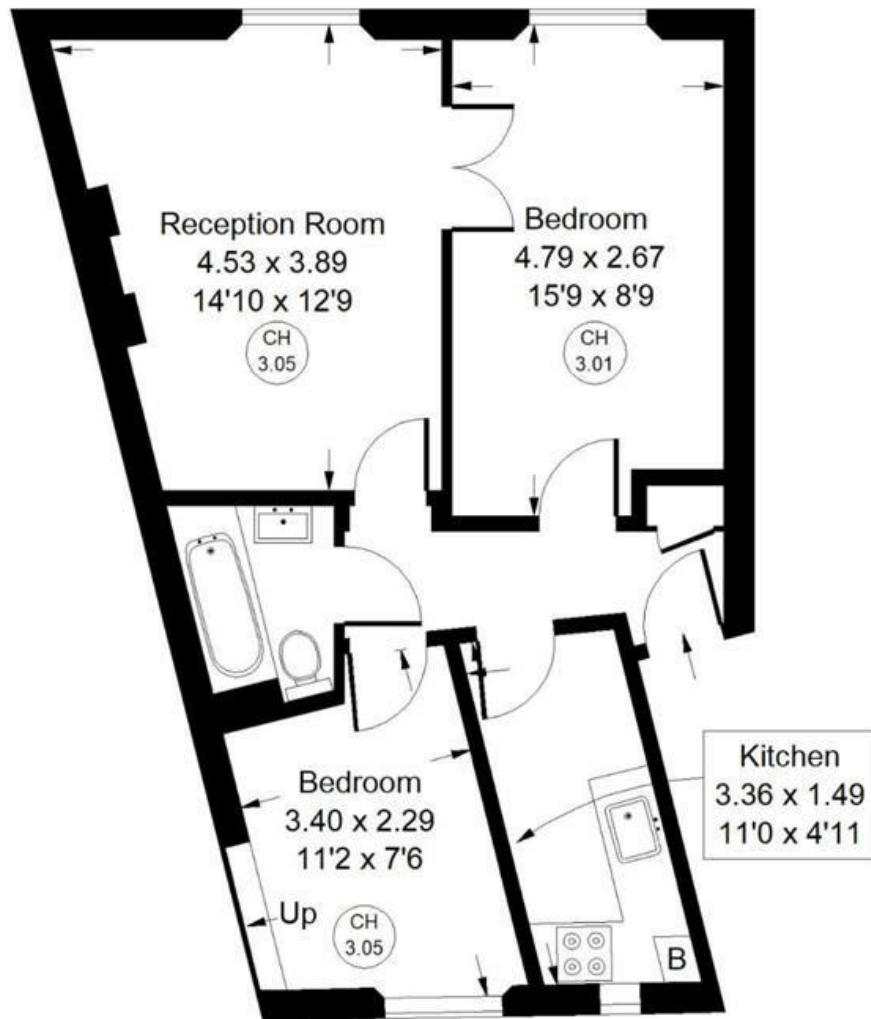
This newly decorated two-bedroom flat is situated on the second floor of an attractive white stucco fronted period building. With impressive 3-metre-high ceilings and large sash windows, the property is filled with natural light throughout. The reception room features new carpeting, while fresh paintwork enhances the entire apartment, and a separate kitchen completes the accommodation.

Chilworth Street is a convenient location, with Hyde Park within walking distance and the vibrant amenities of Paddington, Queensway and Notting Hill all nearby. Transport connections are good, with Paddington Station (Elizabeth Line) around the corner, making this an ideal home for professionals and students alike.

Available now.

Chilworth Street, W2

Approx. Gross Internal Area
48.8 sq m / 525 sq ft



Second Floor

Whilst every attempt has been made to ensure the accuracy of the floor plan, measurements are approximate and not to scale.
No guarantee is given on the total square footage of the property quoted on the plan. Figures given are for guidance.
Plan is for illustration purposes only, not to be used for valuations.

Energy Efficiency Rating

	Current	Potential
Very energy efficient - lower running costs		
(92 plus) A		
(81-91) B		
(69-80) C		
(55-68) D		
(39-54) E		
(21-38) F		
(1-20) G		
Not energy efficient - higher running costs		
England & Wales EU Directive 2002/91/EC		

Environmental Impact (CO₂) Rating

	Current	Potential
Very environmentally friendly - lower CO ₂ emissions		
(92 plus) A		
(81-91) B		
(69-80) C		
(55-68) D		
(39-54) E		
(21-38) F		
(1-20) G		
Not environmentally friendly - higher CO ₂ emissions		
England & Wales EU Directive 2002/91/EC		